

**tastbar.**  
raspberry rhapsody  
winter 2009-10



tastbar.

designed, made and loved in Germany



Kleid MATA mit Rollkragen **TABEA**



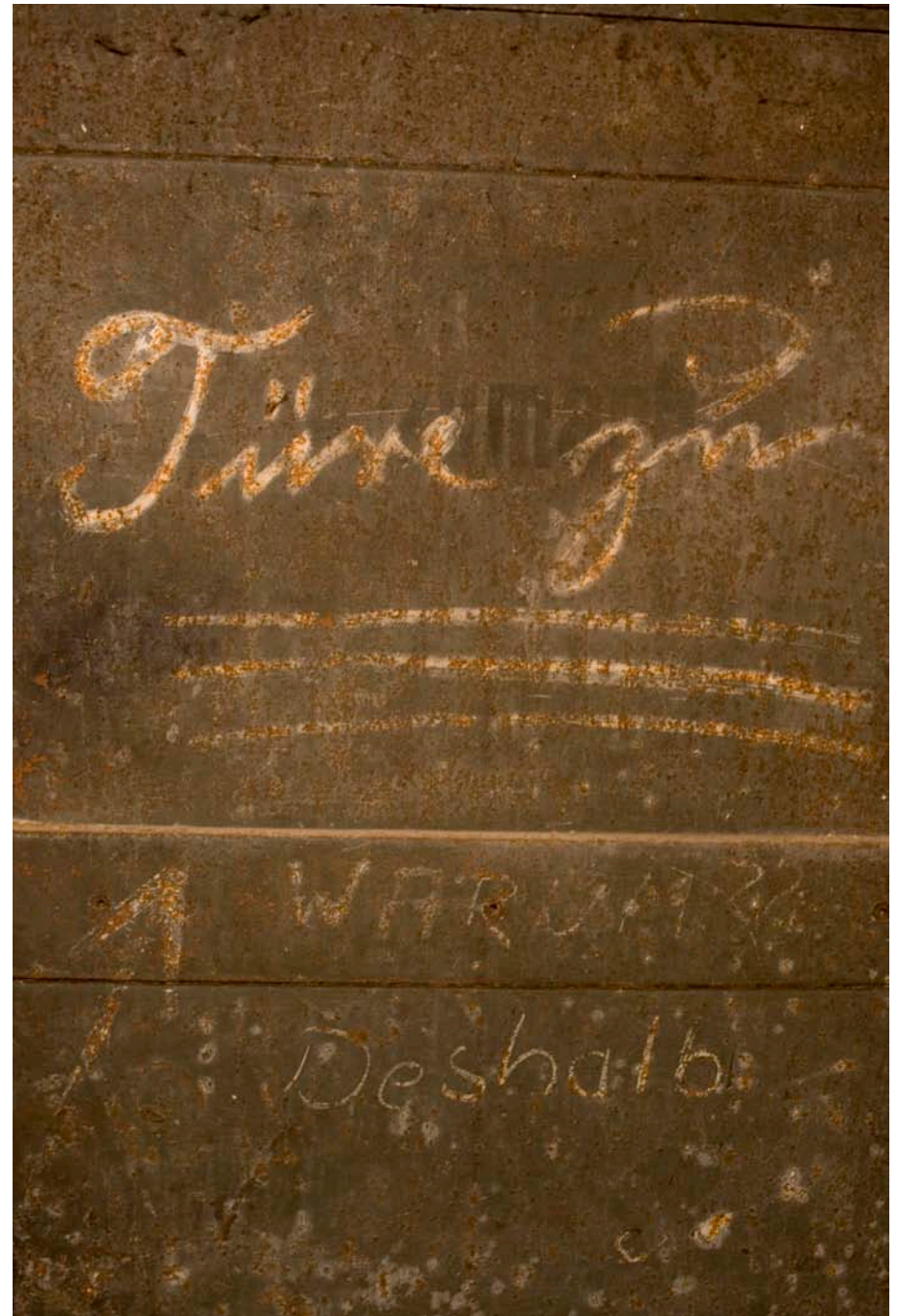
Tuch **THILDE**  
Pullover **HANNA**  
Legging **LALE**



Cape **ANNUKKA**  
Kleid **GARDA**



Cape **ANNUKKA**







Top **ODILE**  
Röhre **LINN**



Bluse **LOU**  
Schal **UDELE**



Blazer **TEDA**  
Bluse **LEONORE**  
Hose **JELENA**







Top **DAYA**  
Hose **JELENA**  
Schal **UDELE**



Top **HELMA**  
Shrug **ALEA**



Kleid **PAULA**  
Legging **DITA**

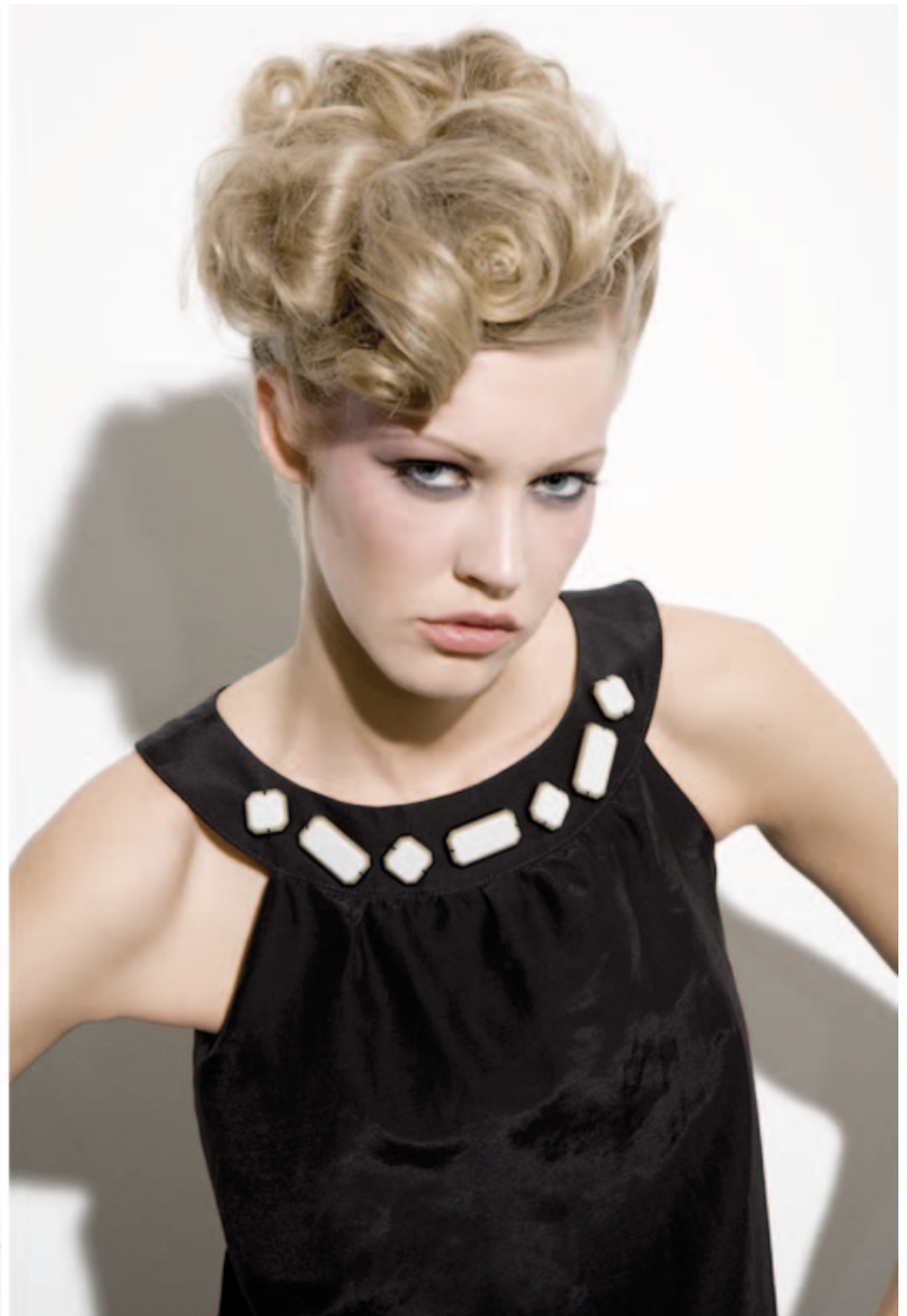


Shirt **LOLA**  
Pumphose **MIEKE**





Kleid **GARDA**  
schwarz oder himbeer





## **tastbar.**

Bernardstrasse 77a  
63067 Offenbach am Main

[info@tastbar.com](mailto:info@tastbar.com)

[www.tastbar.com](http://www.tastbar.com)

Telefon  
+49 (0)69 25751015

**Inhaberin**  
**Nina Knecht**

**Vertrieb**  
sayang textiles  
Customerservice

Telefon  
+49 (0)221 29780866  
Fax  
+49 (0)221 29780867

[info@sayangtextiles.com](mailto:info@sayangtextiles.com)

copyright © 2009

